

# ALPHA

## Simple Application Controllers

### ALPHA 2

the controller with XL capabilities



Get your **FREE** demo version of the AL-PCS/WIN programming software from [www.mitsubishi-automation.com](http://www.mitsubishi-automation.com)

**MORE FLEXIBILITY** 

Up to 8 DC inputs can be configured to be digital or analog providing users with greater flexibility with no additional modules

**IMPROVED COMMUNICATION** 

Communication via GSM, SMS and email help you to remotely maintain your system

**INTELLIGENT DESIGN** 

Optional converters allow users to process Pt100 and K-type thermocouple data when required

# Small, easy to use and full of functionality



Alpha controllers can automate many tasks, for example greenhouse watering, heating and vent control

The Alpha simple application controller is a new class of automation. It replaces low-performance components, such as stand-alone relays and timers, with a single easy to use unit.

## Everything in one

The Alpha 2's design delivers everything a user needs in an easy, user friendly package, for example: power supply, real time calendar-clock, analog and digital signal processing as well as an HMI interface, communication options and AS-interface networking. In fact you can even program the unit directly from the front screen.

### ■ Flexible Input assignment

Up to eight inputs can be selected to have analog or digital input characteristics. This flexibility allows the Alpha 2 to be adapted to many applications mixing push button and proximity inputs with those from level meters and temperature devices.

### ■ Integrated HMI

Each Alpha controller comes with a clear backlit display which can be used for programming, monitoring and as a traditional text based HMI.

### ■ Direct programming

In addition to a user-friendly PC based programming software, users can also program the controllers directly without the need for any additional equipment. So you can still maintain and make changes to the Alpha's program even if you do not have your PC with you.



The clear, back lit, display is easy to read

## Flexible programming

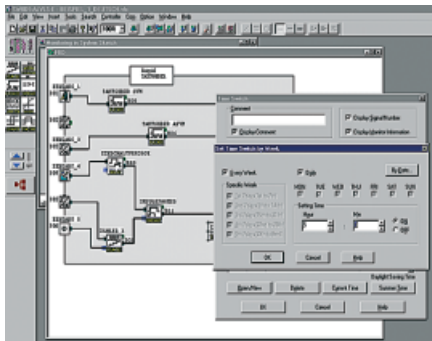
The entire Alpha 2 instruction set was designed specifically with the needs of the automation sector in mind. The programming is based on linking together function blocks to create an automation task. Up to 200 function blocks can be used in a single program with each repeated or used as many times as required.

Function blocks are available for:

- Simple or complex Boolean expressions
- Set/reset functions
- Timers
- Message output to screen
- Analogue configuration (offset/gain); PID
- Arithmetic functions

## Advanced software

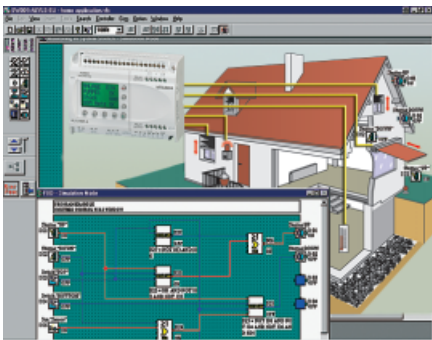
All Alpha controllers can be programmed with the powerful Windows based AL-PCS/WIN package. The program is very easy to use and requires no special skills on the user's part. In fact the programming task is reduced to "drawing" the graphical connection between the function blocks the user wishes to connect.



Programming is as simple as drawing a line

In addition, within the same package, the users program can be simulated in a run mode to ensure that the finished program functions as required.

Programs can also be monitored using a separate visualisation window called "system sketch".



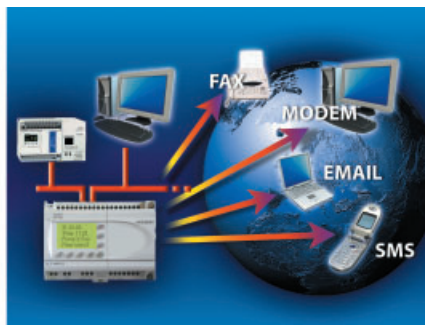
Simulation and using the System Sketch greatly help users get their programs working correctly

## Wide range of options

Standard Alpha controllers have a range of optional I/O expansions, analogue output cards as well as temperature converter modules to help users tailor their controller to their specific needs.

## Flexible communication

One important area for customisation is communication. The Alpha 2 can be connected to an AS-interface network as a slave station providing remote but intelligent control.



The Alpha controllers have multiple communication options

For applications that are inaccessible there is a 2nd interface to a GSM modem. This allows the Alpha 2 to be accessed and programmed remotely even if it is hundreds of kms away making maintenance simpler, easier and cost effective. In addition, the Alpha 2 can also use the same GSM solution to send email and SMS messages to predefined destinations. This provides an ideal way to report back live status information such as number of cycle processed or error status.

## Advanced design

The Alpha 2 has many ground breaking features that offer greater flexibility but with an ease and simplicity of use, for example:

### ■ Program security

Programs can be password protected to prevent unauthorised changes. This also helps to protect the intellectual property rights of the user who created the program, as the program cannot be copied when it is protected.

### ■ Fully featured calendar-clock

The Alpha controllers have an advanced calendar-clock feature allowing up to 1200 events to be programmed days, months and years in advance. This powerful control can be easily used for heating, security and lighting control allowing them to be customised to factory or school holidays as an example.



Closed schools and cold weather are no problems for Alpha controllers

Furthermore, the Alpha 2 also has automatic summer time/winter time compensation and has DCF77 radio clock synchronisation making the calendar-clock very easy to manage.

### ■ Safely in memory

Programs are permanently stored in the Alpha's EEPROM memory. Active data, such as date and time or current count values are backed up for 20 days after power down. This provides users with backup even in the event of an unplanned power loss.

### ■ Wide operational temperature

The units are designed to operate in a temperature range from -25 °C to +55 °C making the Alpha controllers ideal for applications both inside and outside.

# Specifications ///

Base units	AL2-10MR-D	AL2-10MR-A	AL2-14MR-D	AL2-14MR-A	AL2-24MR-D	AL2-24MR-A
I/Os	10		14, expandable to 18		24, expandable to 28	
Power supply	24 V DC	100 – 240 V AC	24 V DC	100 – 240 V AC	24 V DC	100 – 240 V AC
Digital inputs	6		8		15	
Digital inputs with analog capability (0–10V, 9bit)	6	Not applicable	8	Not applicable	8	Not applicable
Relay outputs	4		6		9	
Constant outputs	8 A		8 A		8 A (4x)/2 A (5x)	
Function blocks	Max. 200		Max. 200		Max. 200	
Dimensions (W x H x D) in mm	71.2 x 90 x 52		124.6 x 90 x 52		124.6 x 90 x 52	
Expansion modules for ALPHA 2						
AL2-4EX*	4 dig. inputs (24 V DC) with 2 selectable high-speed counters (1 kHz)					
AL2-4EX-A2*	4 dig. inputs (240 V AC)					
AL2-4EYT*	4 transistor outputs (1A)					
AL2-4EYR*	4 relay outputs (2 A)					
AL2-2DA*	2 analog outputs (0 – 10 V / 4 – 20 mA)					
AL2-2PT-ADP	2 Pt100 temperature converters					
AL2-2TC-ADP	2 K-type thermocouple converters					
Accessories for ALPHA 2						
AL-PCS/WIN-EU	Software CD for Windows, in 7 languages (D/GB/F/I/E/S/RUS), manuals, sample programs					
AL-PCS/WIN-EU-Demo	Demo software CD for Windows (without communication functions), in 7 languages (D/GB/F/I/E/S/RUS), manuals, sample programs					
AL-232CAB	Cable for connecting ALPHA 2 to PC, 2.5 m					
AL2-GSM-CAB	RS-232C for second communications port					
AL2-EEPROM-2	Memory cassette for 200 FBs					
AL2-ASI-BD*	Communications module for field bus, AS-interface, slave					
AL-FRAME 10-IP40	IP40 installation frame					
AL-FRAME 20-IP40	IP40 installation frame					
AL-FRAME 10-IP54	IP54 installation frame with transparent lid					
AL-FRAME 20-IP54	IP54 installation frame with transparent lid					
ALPHA POWER	100–240 V AC / 24 V DC power supply; 0.75 A, 1.5 A, 1.75 A, 2.5 A output					

\* Note: Not applicable to AL2-10MR units

Reference: ALPHA 2 products are sometimes referred to as Alpha XL

## EUROPEAN BRANCHES

MITSUBISHI ELECTRIC EUROPE B.V. 25, Boulevard des Bourlets F-92741 Nanterre Cedex Phone: +33 (0)1 55 48 55 68	<b>FRANCE</b>
MITSUBISHI ELECTRIC EUROPE B.V. Gothaer Straße 8 D-40880 Ratingen Phone: +49 (0)2102 / 486-0	<b>GERMANY</b>
MITSUBISHI ELECTRIC EUROPE B.V. Westgate Business Park, Ballymount IRL-DUBLIN 24 Phone: +353 (0)1 419 88 00	<b>IRELAND</b>
MITSUBISHI ELECTRIC EUROPE B.V. Viale Colleoni 7 I-20041 Agrate Brianza (MI) Phone: +39 039 / 60 53 1	<b>ITALY</b>
MITSUBISHI ELECTRIC EUROPE B.V. Carrera de Rubi 76-8 E-08190 Sant Cugat del Vallés (Barcelona) Phone: +34 93 / 565 3131	<b>SPAIN</b>
MITSUBISHI ELECTRIC EUROPE B.V. Travellers Lane UK-Hatfield, Herts. AL10 8XB Phone: +44 (0)1707 / 27 61 00	<b>UK</b>

## EUROPEAN REPRESENTATIVES

GEVA Wiener Straße 89 AT-2500 Baden Phone: +43 (0)2252 / 85 55 20	<b>AUSTRIA</b>	AutoCont Technologická 374/6 CZ-708 00 Ostrava - Pustkovec Phone: +420 595 691 150	<b>CZECH REPUBLIC</b>	UTECO A.B.E.E. 5, Mavrogenou Str. GR-18542 Piraeus Phone: +30 211 / 1206 900	<b>GREECE</b>	INTEHSIS srl bld. Traian 23/1 MD-2060 Kishinev Phone: +373 (0)22 / 66 4242	<b>MOLDOVA</b>	ICOS Ryazanskij Prospekt, 8A, Office 100 RU-109428 Moscow Phone: +7 495 / 232 0207	<b>RUSSIA</b>	Beijer Electronics AB Box 426 SE-20124 Malmö Phone: +46 (0)40 / 35 86 00	<b>SWEDEN</b>
Tehnikon Oktyabrskaya 16/5, Off. 703-711 BY-220030 Minsk Phone: +375 (0)17 / 210 46 26	<b>BELARUS</b>	B:TECH a.s. Na Ostrove 84 CZ-580 01 Havlickuv Brod Phone: +420 (0)569 / 408 841	<b>CZECH REPUBLIC</b>	MELTRADE Ltd. Fertő utca 14. HU-1107 Budapest Phone: +36 (0)1 / 431-9726	<b>HUNGARY</b>	Beijer Electronics AS Postboks 487 NO-3002 Drammen Phone: +47 (0)32 / 24 30 00	<b>NORWAY</b>	NPP "URALELEKTRA" Sverdlova 11A RU-620027 Ekaterinburg Phone: +7 343 / 353 2745	<b>RUSSIA</b>	ECONOTEC AG Hinterdorfstr. 12 CH-8309 Nürensdorf Phone: +41 (0)44 / 838 48 11	<b>SWITZERLAND</b>
Koning & Hartman B.V. Woluwelaan 31 BE-1800 Vilvoorde Phone: +32 (0)2 / 257 02 40	<b>BELGIUM</b>	B:TECH a.s. Headoffice, U Borové 69 CZ-580 01 Havlickuv Brod Phone: +420 569 777 777	<b>CZECH REPUBLIC</b>	TEYEL Electronics Ltd. 2 Ha'imaniut, P.O.B. 6272 IL-42160 Netanya Phone: +972 (0)9 / 863 08 91	<b>ISRAEL</b>	Koning & Hartman B.V. Haarlerbergweg 21-23 NL-1101 CH Amsterdam Phone: +31 (0)20 / 587 76 00	<b>NETHERLANDS</b>	CRAFT Cons. & Eng. d.o.o. Bulevar Svetog Cara Konstantina 80-86 SER-18106 Nis Phone: +381 (0)18 / 292-24-4/5, 523 962	<b>SERBIA</b>	GTS Darulaceze Cad. No. 43 KAT. 2 TR-34384 Okmeydani-Istanbul Phone: +90 (0)212 / 320 1640	<b>TURKEY</b>
Akhmaton 4 Andrej Ljapchev Blvd. Pk 21 BG-1756 Sofia Phone: +359 (0)2 / 97 44 05 8	<b>BULGARIA</b>	Beijer Electronics A/S Lautruphøj 1-3 DK-2750 Ballerup Phone: +45 (0)70 / 26 46 46	<b>DENMARK</b>	Kazpromautomatiks Ltd. 2, Scladsckaya str. KAZ-470046 Karaganda Phone: +7 3212 / 50 11 50	<b>KAZAKHSTAN</b>	MPL Technology Sp. z o.o. Ul. Krakowska 50 PL-32-083 Balice Phone: +48 (0)12 / 630 47 00	<b>POLAND</b>	INEA SR d.o.o. Karadjordjeva 12/260 SER-113000 Smederevo Phone: +381 (0)26 / 617 163	<b>SERBIA</b>	CSC Automation Ltd. 15, M. Raskova St., Fl. 10, Office 1010 UA-02002 Kiev Phone: +380 (0)44 / 494 33 55	<b>UKRAINE</b>
INEA CR d.o.o. Losinjska 4 a HR-10000 Zagreb Phone: +385 (0)1 / 36 940-01/-02/-03	<b>CROATIA</b>	Beijer Electronics EESTI OÜ Pärnu mnt.160i EE-11317 Tallinn Phone: +358 (0)16 / 51 81 40	<b>ESTONIA</b>	Beijer Electronics SIA Vestienas iela 2 LV-1035 Riga Phone: +371 (0)784 / 2280	<b>LATVIA</b>	Sirius Trading & Services srl Aleea Lacul Morii Nr. 3 RO-060841 Bucuresti, Sector 6 Phone: +40 (0)21 / 430 40 06	<b>ROMANIA</b>	CSMTrade Slovensko, s.r.o. Vajanskeho 58 SK-92101 Piestany Phone: +421 (0)33 / 7742 760	<b>SLOVAKIA</b>	INEA d.o.o. Stepe 11 SI-1000 Ljubljana Phone: +386 (0)1 / 513 8100	<b>SLOVENIA</b>
AutoCont Jelinkova 59/3 CZ-721 00 Ostrava Svinov Phone: +420 (0)59 / 5691 150	<b>CZECH REPUBLIC</b>	Beijer Electronics OY Jaakonkatu 2 FIN-01620 Vantaa Phone: +358 (0)207 / 463 500	<b>FINLAND</b>	Beijer Electronics UAB Savanoriu Pr. 187 LT-02300 Vilnius Phone: +370 (0)5 / 232 3101	<b>LITHUANIA</b>	Elektrostroji Rubzovskajaja nab. 4-3, No. 8 RU-105082 Moscow Phone: +7 495 / 545 3419	<b>RUSSIA</b>	INEA d.o.o. Stepe 11 SI-1000 Ljubljana Phone: +386 (0)1 / 513 8100	<b>SLOVENIA</b>	CBI Ltd. Private Bag 2016 ZA-1600 Isando Phone: +27 (0)11 / 928 2000	<b>SOUTH AFRICA</b>



Mitsubishi Electric Europe B.V. /// FA - European Business Group /// Gothaer Straße 8 /// D-40880 Ratingen /// Germany  
Tel.: +49(0)2102-4860 /// Fax: +49(0)2102-4861120 /// info@mitsubishi-automation.com /// www.mitsubishi-automation.com

Specifications subject to change /// Art. no. 168635-B /// 03.2008

All trademarks and copyrights acknowledged.