

# FX Family

## Profibus Networking Solutions

### Master, Slave and Remote I/Os

the whole solution, all from one series



**IMPROVED COMMUNICATION**

Total Profibus control solution from one series reduces maintenance burdens

**SPEED UP**

Profibus/DP compliance;  
244 byte handling of acyclic communication up to 12 MBPS

**SIMPLER OPERATION**

Reduced installation time with easy set-up and configuration software and even automatic program block generation

**MORE FLEXIBILITY**

Reduced spares handling by using common I/O blocks for PLC nodes and remote I/O levels

# Simple, effective and reliable



Common control applied at all levels

Profibus/DP is a popular fieldbus network with Process and Control engineers. Its open communication ability enables leading products from many manufactures to be linked together in a single harmonious communication process.

## An open approach

In common with many manufacturers Mitsubishi Electric has enabled a wide range of its own products to be networked on various industrial networks such as CC-Link, Profibus/DP, DeviceNET, CANopen and of course Ethernet and MELSENET to name but a few.

In the case of Profibus/DP there is comprehensive support across Mitsubishi's whole automation portfolio; from remote I/O solutions such as MELSEC ST series through to compact masters for FX PLCs and advanced DPV2 masters for System Q. In addition, many Mitsubishi power and drives products are also connectable including inverters, servos and robots in addition to PLCs, HMIs and LV products.

## Two sides of the same coin

Generally open networking has been a good thing enabling many users to mix exactly the right type of control at all levels. But sometimes it has been achieved at a cost, for example:

- Each manufacturer may be motivated to support only their products
- Integration may not be so easy as it should be
- Product solutions and product quality may be variable across manufacturers
- Economies of scale, purchasing from a single manufacturer, may not be maximised

## Something special

Being a manufacturer ourselves we can completely understand these problems, which is why we created a rather unique solution.

We have developed a Profibus/DP I/O and control solution based on the popular FX PLC family which offers users an alternative. It is built on using the same I/O devices at three levels.

1	<b>Remote I/O devices</b>
2	<b>Intelligent PLC slave stations</b>
3	<b>Comprehensive PLC master stations</b>

## Increased savings and confidence

This elegantly simple solution will help to lower many of the costs that open network users can face. For example:

- **Reduced costs of ownership**  
as one manufacturer will take responsibility for elements at multiple levels of your architecture.
- **Reduce spares handling**  
as common components are used through out the system.
- **Reduced maintenance**  
as engineers only have to learn one control concept and can focus on supporting a reduced set of components.
- **Easier upgrade and system extension**  
as remote I/O nodes can be "grown" or redefined into intelligent slave stations.
- **Increased system reliability**  
as many elements come from one of the top global automation suppliers.

Master



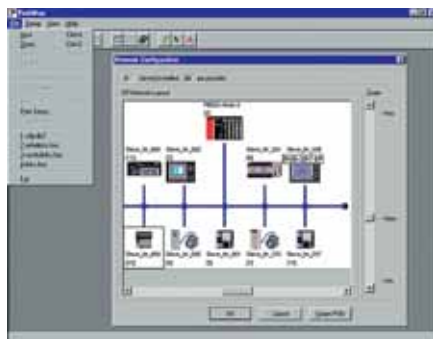
Slave



Remote I/O



Flexible, common devices reduces maintenance overheads and can help to increase system availability



Screenshot GX Configurator-DP

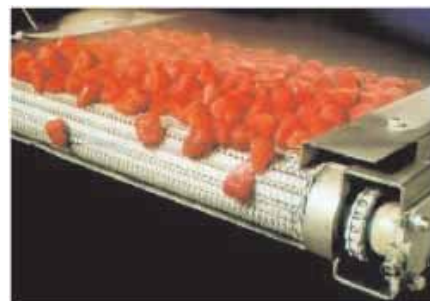
## User-friendly configuration

Mitsubishi Electric automation users can also benefit from using GX Configurator DP. This is Mitsubishi's own Profibus/DP configuration software that can even automatically generate configuration code to be loaded into your own FX or System Q PLC program, saving users time and money.

## Even more solutions

Other Mitsubishi, Profibus/DP solutions include:

- **Profibus/DP, DPV1/V2 master** for Mitsubishi's Modular PLC, System Q. This allows users to take full advantage of many of the extended features of the Profibus/DP network not always supported by all manufacturers.
- **MR-MG30 Profibus/DP to Mitsubishi SSCNET II** motion control network. This handy bridging module allows users to connect their SSCNET II networked not always supported by all manufacturers.
- **Mitsubishi ST slice I/O.** For users who need the greatest I/O flexibility, even down to a single point. Other benefits include easy maintenance with hot swapping and encoded switching modules.



From car manufacturing to the delicate handling and sorting of fresh fruit – Profibus/DP has delivered benefits for over a decade

# Specifications ///

Specifications	FX3U-64DP-M	FX0N-32NT-DP	FX3U-32-DP	FX2N-32DP-IF(-D)
Module type	Profibus/DP Master module, class 1	Profibus/DP Intelligent slave	Profibus/DP Intelligent slave	Profibus/DP Remote I/O bridge
Transmission data	32 bytes/slave (normal service mode), 244 bytes/slave (extended service mode)	20 bytes/unit	144 bytes/unit	200 bytes/unit
Max. number of units per system	1 unit (on a PLC), 3 units (within a Profibus/DP network)	1 unit (on a PLC), 64 units (within a Profibus/DP network)	8 units	1 unit (per remote I/O station), 64 units (within a Profibus/DP network)
Profibus standard	Max. number of repeaters/communication path	3 units	—	—
	Max. number of stations/segment	32 stations	—	—
	No. of connectable nodes per master	64 slaves	—	—
Transmission type	Bus network			
Supported transmission speed (bps) and bus length	9.6 k / 19.2 k / 93.75 k	1,200 m / segment		
	187.5 k	1,000 m / segment		
	500 k	400 m / segment		
	1.5 M	200 m / segment		
	3 M / 6 M / 12 M	100 m / segment		
Profibus/DP network connector	9-pin D-SUB			
Global control	Synchronization, unsynchronization, freeze and unfreeze modes are supported			
Terminal resistor	Not built-in			
LED indicators	POWER, RUN, FROM/TO, TOKEN and ERROR	POWER, DC (24 V DC external), RUN, BF (communication error) and DIA (Diagnostic data)	POWER, FROM/TO, TOKEN, RUN, and DIA (Diagnostic data)	POWER, RUN, BF (communication error) and DIA (Diagnostic data)
Applicable PLC	Mitsubishi FX3U series PLC	Mitsubishi FX0N, FX2N, FX1N, FX2NC and FX3U PLCs	Mitsubishi FX3U series PLC	Not applicable
No. of occupied I/O points	8 points taken from the PLC extension bus (either input or output)			Not applicable
Power supply	24 V DC (max. 155 mA from base unit)	24 V DC (max. 60 mA), 5 V DC (max. 170 mA from the PLC bus)	24 V DC (max. 145 mA from base unit)	FX2N-32DP-IF: 100 – 240 V AC FX2N-32DP-IF-D: 24 V DC (14W)
Dimensions (W × H × D)	mm	43 x 90 x 87	43 x 90 x 87	43 x 90 x 87
Weight		0.2 kg	0.3 kg	0.2 kg

## EUROPEAN BRANCHES

MITSUBISHI ELECTRIC EUROPE B.V. 25, Boulevard des Bouvets F-92741 Nanterre Cedex Phone: +33 (0)1 55 68 55 68	<b>FRANCE</b>
MITSUBISHI ELECTRIC EUROPE B.V. Gothaer Straße 8 D-40880 Ratingen Phone: +49 (0)2102 / 486-0	<b>GERMANY</b>
MITSUBISHI ELECTRIC EUROPE B.V. Westgate Business Park, Ballymount IRL-Dublin 24 Phone: +353 (0)1 419 88 00	<b>IRELAND</b>
MITSUBISHI ELECTRIC EUROPE B.V. Viale Colleoni 7 I-20041 Agrate Brianza (MI) Phone: +39 039 / 60 53 1	<b>ITALY</b>
MITSUBISHI ELECTRIC EUROPE B.V. Carretera de Rubí 76-80 E-08190 Sant Cugat del Vallés (Barcelona) Phone: +34 93 / 565 3131	<b>SPAIN</b>
MITSUBISHI ELECTRIC EUROPE B.V. Travellers Lane UK-Hatfield, Herts. AL10 8XB Phone: +44 (0)1707 / 27 61 00	<b>UK</b>

## EUROPEAN REPRESENTATIVES

GEVA Wiener Straße 89 AT-2500 Baden Phone: +43 (0)2252 / 85 55 20	<b>Austria</b>	AutoCont Technologická 374/6 CZ-708 00 Ostrava - Pustkovec Phone: +420 595 691 150	<b>CZECH REPUBLIC</b>	UTEKO A.B.E.E. 5, Mavrogenou Str. GR-18542 Piraeus Phone: +30 211 / 1206 900	<b>Greece</b>	INTEHSIS srl bld. Traian 23/1 MD-2060 Kishinev Phone: +373 (0)22 / 66 4242	<b>Moldova</b>	ICOS Ryazanskij Prospekt, 8A, Office 100 RU-109428 Moscow Phone: +7 495 / 232 0207	<b>RUSSIA</b>	Beijer Electronics AB Box 426 SE-20124 Malmö Phone: +46 (0)40 / 35 86 00	<b>Sweden</b>
TEHNIKON Oktyabrskaya 16/5, Off. 703-711 BY-220030 Minsk Phone: +375 (0)17 / 210 46 26	<b>Belarus</b>	BEITECH, a.s. Na Ostrove 84 CZ-580 01 Havlickuv Brod Phone: +420 (0)569 / 408 841	<b>CZECH REPUBLIC</b>	MELTRADE Ltd. Fertő utca 14. HU-11017 Budapest Phone: +36 (0)1 / 431-9726	<b>Hungary</b>	Beijer Electronics AS Postboks 487 NO-3002 Drammen Phone: +47 (0)32 / 24 30 00	<b>Norway</b>	NPP "URALEKTRA" Sverdlova 11A RU-620027 Ekaterinburg Phone: +7 343 / 353 2745	<b>RUSSIA</b>	ECONOTEC AG Hinterdorfstr. 12 CH-8309 Nürensdorf Phone: +41 (0)44 / 838 48 11	<b>Switzerland</b>
Koning & Hartman B.V. Woluwelaan 31 BE-1800 Vilvoorde Phone: +32 (0)2 / 257 02 40	<b>Belgium</b>	BEITECH, a.s. Headoffice, U Borové 69 CZ-580 01 Havlickuv Brod Phone: +420 569 777 777	<b>CZECH REPUBLIC</b>	TEXEL Electronics Ltd. 2 Ha 'umanut, P.O.B. 6272 IL-42160 Netanya Phone: +972 (0)9 / 863 08 91	<b>Israel</b>	Koning & Hartman B.V. Haarlerbergweg 21-23 NL-1101 CH Amsterdam Phone: +31 (0)20 / 587 76 00	<b>Netherlands</b>	CRAFT Cons. & Eng. d.o.o. Bulevar Svetog Cara Konstantina 80-86 SER-18106 Nis Phone: +381 (0)18 / 292-24-4/5, 523962	<b>Serbia</b>	GTS Darulaceze Cad. No. 43 KAT. 2 TR-34384 Okmeydani-Istanbul Phone: +90 (0)212 / 320 1640	<b>Turkey</b>
AKHNATON 4 Andrej Ljapchev Blvd. Pb 21 BG-1756 Sofia Phone: +359 (0)2 / 97 44 05 8	<b>BULGARIA</b>	Beijer Electronics A/S Lautrupvej 1-3 DK-2750 Ballerup Phone: +45 (0)70 / 26 46 46	<b>Denmark</b>	Kazpromautomatiks Ltd. 2, Scladskaya str. KAZ-470046 Karaganda Phone: +972 (0)9 / 863 08 91	<b>Kazakhstan</b>	MPL Technology Sp. z o.o. Alaea Lacul Morii Nr. 3 PL-32-083 Balice Phone: +48 (0)12 / 630 47 00	<b>Poland</b>	INEA SR d.o.o. Karadjordjeva 12/260 SER-113000 Smederevo Phone: +381 (0)12 / 617 163	<b>Serbia</b>	CSC Automation Ltd. 15, M. Baskova St., Fl. 10, Office 1010 UA-02002 Kiev Phone: +380 (0)44 / 494 33 55	<b>Ukraine</b>
INEA CR d.o.o. Losinjska 4 a HR-10000 Zagreb Phone: +385 (0)1 / 36 940 - 01 / 02 / 03	<b>Croatia</b>	Beijer Electronics EESTI OÜ Pärnu mnt.160i EE-11317 Tallinn Phone: +358 (0)6 / 51 81 40	<b>Estonia</b>	Vestiens iela 2 LV-1035 Riga Phone: +371 (0)784 / 2280	<b>Latvia</b>	Sirius Trading & Services srl Aleea Lacul Morii Nr. 3 RO-060841 Bucuresti, Sector 6 Phone: +40 (0)21 / 430 40 06	<b>Romania</b>	CSMTrade Slovensko, s.r.o. Vajanskeho 58 SK - 92101 Piestany Phone: +421 (0)33 / 7742 760	<b>Slovakia</b>		
AutoCont Jelinkova 59/3 CZ-721 00 Ostrava Svinov Phone: +420 (0)59 / 5691 150	<b>CZECH REPUBLIC</b>	Beijer Electronics OY Jaakonkatu 2 FIN-01620 Vantaa Phone: +358 (0)207 / 463 500	<b>Finland</b>	Beijer Electronics UAB Savanoriu Pr. 187 LT-02300 Vilnius Phone: +370 (0)5 / 232 3101	<b>Lithuania</b>	ELEKTROSTILY Rubzovskaja nab. 4-3, No. 8 RU-105082 Moscow Phone: +7 495 / 545 3419	<b>RUSSIA</b>	INEA d.o.o. Stegne 11 SI-1000 Ljubljana Phone: +386 (0)1 / 513 8100	<b>Slovenia</b>	CBi Ltd. Private Bag 2016 ZA-1600 Isando Phone: +27 (0)11 / 928 2000	<b>South Africa</b>



Mitsubishi Electric Europe B.V. /// FA - European Business Group /// Gothaer Straße 8 /// D-40880 Ratingen /// Germany  
Tel.: +49(0)2102-4860 /// Fax: +49(0)2102-4861120 /// info@mitsubishi-automation.com /// www.mitsubishi-automation.com

Specifications subject to change /// Art. no. 191922-A /// 11.2007

All trademarks and copyrights acknowledged.